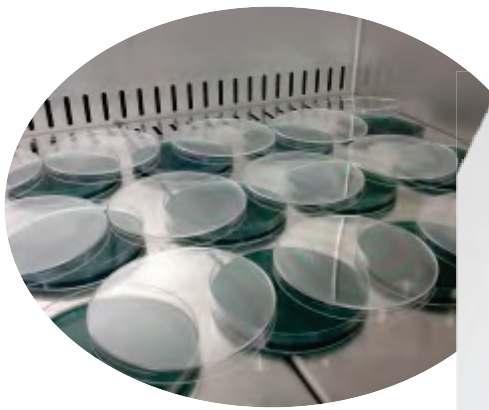




- // CLIMATIC TEST CHAMBERS
- // HORIZONTAL FLOW CHAMBERS FOR ICH TESTS
- // PHARMACEUTICAL STABILITY TEST CHAMBERS
- // PHOTOSTABILITY TESTING
- // FROST FORMATION TEST
- // DROSOPHILIA AND ENTOMOLOGY CHAMBERS
- // LARGE CAPACITY INCUBATORS
- // LOW TEMPERATURE CHAMBERS
- // TISSUE CULTURE TEST CHAMBERS
- // REFRIGERATED INCUBATORS FOR BOD



MULTI-USE REFRIGERATED INCUBATORS (ERIS MODELS) TECHNICAL SPECIFICATIONS

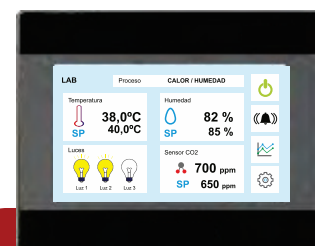
- Cooling system by vertical forced air, evenly distributed, with high homogeneity inside the chamber.
- PID microprocessor, to control all parameters, with fuzzy logic, to ensure high stability of the temperature inside the chamber.
- Temperature range from +4°C to 55°C, optional from -10°C/-20°C/-30°C to +55°C/+60°C.
- Security thermostat, to protect from high temperatures.
- +/-0.1°C precision on-screen.
- +/-1.0°C homogeneity on the chamber's inside at 37°C.
- +/-0.85°C stability on the chamber's inside at 37°C. (acc. to the model)
- NTC Probe for temperature control, depending on the model.
- Independent cooling and heating systems.

TECHNICAL SPECIFICACIONES FOR ERIS, ERIS/HR, ERI AND ERI/HR MODELS

- Includes series 4100 controller with graphical data representation, temperature range from +4°C to +55°C (from -10°C/-20°C/-30°C to +55°C is optional).
- 4.3" TFT Touchscreen with graphical representation of the temperature and humidity curve.
- Independent alarms, audibles and visuales, for maximum and minimum temperatures, probe and power failure.
- On ERIS models: backup batteries (48h autonomy) with built-in charger.
- Control panel protection by numerical password.
- Blind door models with opening aids and large handle.
- Internal LED lightning with separated switch (optional).
- "C" type models include thermic glass door in the data table (with heated frame in models with humidity and low temperature control).
- Door opening, on the right or left (please, specify when ordering).
- Safety lock with key on the door.
- Cooling gas, CFC and HCFC free, biodegradable.
- Hermetic compressor, on the dampers to reduce noise levels.
- AISI 304 stainless steel internal and external finish.
- Steel rod tray covered in plastic (stainless steel optional), with adjustable height.
- Magnetic seal in external door, to ensure perfect closure.
- Wall bypass to introduce wires and external instruments.
- 60mm density polyurethane insulator, CFC and HCFC free.
- Stainless steel legs with adjustable height.
- Functioning in work areas with temperatures up to +32°C.



// ERIS 1240



ICH NANODAC test Controller for models finished in "3"

- TFT Touchscreen of 4.3" (7.0" optional) with graphical measurement data representation.
- GSM Telephone alarm module (optional).
- RS 485 Conexion for remote control (optional)
- Ethernet output, to monitor data by cable (MODBUS TCP/ICP) or by wireless module, including specific software for visualization and control of the data (optional).
- Battery duration with bigger backup of 48 hours (72 hours optional).

REFRIGERATED INCUBATORS - INOX BASIC LINE FOR CLIMATIC AND STABILITY TESTS VERTICAL FLOW AIR FORCED MODELS WITH HUMIDITY CONTROL

ERIS/HR AND ERI/HR MODELS FROM +4°C TO +55°C
HUMIDITY RANGE FROM 20% TO 89% RH

OPTIONAL
HUMIDITY RANGE FROM 20% TO 90% RH

**From -30° a +55°C
From 20% to 90% HR**



ERIS/HR AND ERI/HR TECHNICAL SPECIFICATIONS

- Humidity control: work range from 20% to 80% RH (+/-3% RH), temperature range from +20°C to +40°C, optional: 20% to 90% RH.
- Forced air cooling system, vertically distributed with high temperature homogeneity in the chamber's inside.
- PID Microprocessor, for parameters control, ensures high stability temperature.
- Temperature range from +4°C to +55°C, optional from -10°C to +55°C/ -20°C to +55°C/ -30°C to +55°C/ +60°C without humidity.
- 4.3" TFT Touchscreen with graphical representation of the temperature's and/or humidity's curve.
- +/-0.1°C precision on-screen.
- +/-1.0°C Homogeneity on the chamber's inside at 37°C
- +/-0.85°C stability on the chamber's inside at 37°C, (acc. to the model)
- Independent cooling and heating systems, depending on the model.
- Pt100 or capacitive probe (depending on the model) for temperature's control.
- Capacitive electronic probe (4-20 mA), for humidity control, with a +/-2% RH precision.
- Ultrasounds humidity generator, introduces microscopic water drops at ambient temperature inside the chamber.
- Optional: electrode vapour generation.
- Condensation drying system, cooling vaporizer.

OPTIONAL ACCESSORIES

See page 31



// ERI 1240 HR



2000 series Controller for ERI models

- Numerical password protection, with PIN and independent code.
- Visual and audible alarm signalling:
 - High/Low temperature with programmed limits by user through main menu.
 - Open door alarm with 30" leeway to allow standard operations (optional).
 - Alarm delay time programmable through the menu.
 - Probe failure.
- Audible alarm system, with continuous indication on-screen and automatic back-light if the situation persists.
- Optional: power failure alarm with backup battery loner than 48 hours (72 hours optional)

RANGE	REFRIGERATED INCUBATORS - INOX BASIC LINE					
ERIS MODELS WITH HUMIDITY CONTROL	ERIS 325 HR	ERIS 525 HR	ERIS 615 HR	ERIS 900 HR	ERIS 1120 HR	ERIS 1240 HR
ERIS MODELS WITHOUT HUMIDITY CONTROL	ERIS 325	ERIS 525	ERIS 615	ERIS 900	ERIS 1120	ERIS 1240
ERI MODELS WITH HUMIDITY CONTROL	ERI 325 HR	ERI 525 HR	ERI 615 HR	ERI 900 HR	ERI 1120 HR	ERI 1240 HR
ERI MODELS WITHOUT HUMIDITY CONTROL	ERI 325	ERI 525	ERI 615	ERI 900	ERI 1120	ERI 1240
TEMP. [°C] RANGE WITHOUT HUMIDITY CONTROL	+ 4/ + 55 [Optional: -10°C/-20°C/-30°C]					
TYPE OF ERIS/ERI CONTROLLER	4001 CONTROLLER in ERIS models / 2000 CONTROLLER in ERI models					
MODELS WITH CONTROLLED HUMIDITY	from 20% to 90% HR					
TEMP. RANGE WITH CONTROLLED HUMIDITY [°C]	+ 20/ + 40	+ 20/ + 40	+ 20/ + 40	+ 20/ + 40	+ 20/ + 40	+ 20/ + 40
RATED CAPACITY NET/GROSS [liters]	300/325	515/525	610/615	828/900	1120/1126	1240/1289
INTERIOR MEASUREMENTS [mm] W x D x H*	372 x 558 x 1412	544 x 683 x 1388	544 x 683 x 1529	637 x 851 x 1529	1235 x 683 x 1335	1235 x 683 x 1529
EXTERIOR MEASUREMENTS [mm] W x D x H*	482 x 695 x 2100	687 x 794 x 1989	687 x 794 x 2130	756 x 960 x 2130	1385 x 794 x 1989	1385 x 794 x 2125
CLEAR OF DOOR [mm] W x H**	375 x 1495	580 x 1345	580 x 1304	650 x 1495	580 x 1104	580 x 1304
INSULATOR THICKNESS [mm]	55	75	75	75	55	75
INTERIOR FINISH	Stainless steel					
EXTERIOR FINISH	Stainless steel					
INTERIOR DOOR	Optional	Optional	Optional	Optional	Optional	Optional
TYPE OF EXTERIOR DOOR	Blind	Blind	Blind	Blind	Blind	Blind
LOCK	Yes	Yes	Yes	Yes	Yes	Yes
NUMBER OF SHELVES	3	3	3	3	3 + 3	3 + 3
SIZE OF THE SHELVES [mm] W X D***	325 x 530	530 x 650	530 x 650	660 x 800	530 x 650	530 x 650
MATERIAL OF THE SHELVES	Steel rod covered in plastic					
SHELVES SURFACE/ CHAMBER'S TOTAL [m ²]	0,17	0,34	0,34	0,54	0,34	0,34
WALL BYPASS / CABLE GLAND	Yes	Yes	Yes	Yes	Yes	Yes
INTERNAL SOCKETS	Optional	Optional	Optional	Optional	Optional	Optional
DATALOGGER	In models with 4001 series controller					
USB OUTPUT	In models with 4001 series controller					
SCREEN GRAPHICS	In models with 4001 series controller					
RS485 CONNECTION PORT WITH MODBUS	In models with 4001 series controller					
REMOTE ALARM EXIT FREE OF POTENTIAL	Yes	Yes	Yes	Yes	Yes	Yes
BATTERY	In models with 4001 series controller					
VOLTAGE FAILURE ALARM	In models with 4001 series controller					
ROOM TEMPERATURE PROBE	Optional	Optional	Optional	Optional	Optional	Optional
TYPE OF COOLING	R134a optional R290, depending on the application					
ROOM TEMPERATURE PROBE	from +10°C to +32°C					
ELECTRIC POWER [W]	200	200	500	1000	1100	1500
VOLTAGE / FREQUENCY [V/HZ]	230/50 optional 110/60 and 220/60					
WEIGHT [KG]	104	127	148	180	187	246

*Width x Depth x Height **Width x Height ***Widht x Depth

REFRIGERATED INCUBATORS - LINE 4000
FOR CLIMATIC AND STABILITY TESTS
VERTICAL FORCED AIR MODELS

LABORATORY INCUBATORS
REFRIGERATED WITH FORCED AIR

ERIS 4000 AND ERI 4000 MODELS
FROM +4°C TO +55°C

OPTIONAL
FROM -10°C TO +55°C

From +4° to +55°C



// **ERIS 40455**
4001 series Controller



ERI 40070
2000 series Controller



Optional internal sockets
for instrument connexion

TECHNICAL SPECIFICATIONS

- Forced air cooling system
- PID microprocessor to control parameters
- Temperature range from +4°C to +55°C, optional: -10°C to +55°C/ -20°C to +55°C/ -30°C to +55°C
- Safety thermostat to protect the product.
- Audible, visible and independent alarm for maximal and minimal temperatures.
- Backlighted LED screen for temperature and parameters control.
- +/-0.1°C precision on-screen.
- +/-1.0°C homogeneity on the chamber's inside at 37°C.
- +/-0.5°C stability on the chamber's inside at 37°C.
- Pt 100 probe, for temperature control.
- Optional: glass internal door with independent seal.
- Control panel with touchscreen.
- Internal illumination with separated switch.
- Optional: temperature/ time ramps programming, with storage of different working cycles.
- Stop alarm switch, it rearms when the programmed temperature is reached.
- Wall bypass for wire access, probes, for external/ internal instruments connexion.

- PID controlled temperature.
- Finned heating element, improves the temperature's distribution.
- Independent heating and cooling systems.
- Forced air venting, with vertical air flow, evenly distributed, allowing more homogeneity of the air's temperature inside the chamber.
- R134a cooling gas, R290 alternative, CFC and HCFC free.
- Hermetic compressor, installed on the dampers to reduce noise levels.
- Steel exterior finish covered in epoxy.
- Interior finish: steel covered in epoxy or inox, optional.
- Magnetic all-round seal allowing a perfect closure of the door.
- High density injected polyurethane insulator, CFC and HCFC free.
- Adjustable-height legs, optional wheels.
- Functioning in work areas with temperatures up to +32°C.

OPTIONAL ACCESSORIES

See page 31

RANGE	VERTICAL FLOW REFRIGERATED INCUBATORS - LINE 4000					
ERIS MODELS WITH HUMIDITY CONTROL		ERIS 40070 HR INOX		ERIS 40150 HR INOX		ERIS 40255 HR INOX
ERIS MODELS WITHOUT HUMIDITY CONTROL	ERIS 40070	ERIS 40070 INOX	ERIS 40150	ERIS 40150 INOX	ERIS 40255	ERIS 40255 INOX
ERI MODELS WITH HUMIDITY CONTROL		ERI 40070 HR INOX		ERI 40150 HR INOX		ERI 40255 HR INOX
ERI MODELS WITHOUT HUMIDITY CONTROL	ERI 40070	ERI 40070 INOX	ERI 40150	ERI 40150 INOX	ERI 40255	ERI 40255 INOX
TEMP. [°C] RANGE WITHOUT HUMIDITY CONTROL	+ 4/ + 55 [Optional: -10°C/-20°C/-30°C]					
TYPE OF ERIS/ERI CONTROLLER	from 20% to 90% HR					
MODELS WITH CONTROLLED HUMIDITY	+ 20/ + 40					
TEMP. RANGE WITH CONTROLLED HUMIDITY [°C]	4001 CONTROLLER in ERIS models / 2000 CONTROLLER in ERI models					
RATED CAPACITY NET/GROSS [liters]	65/70	65/70	135/150	135/150	223/255	223/255
INTERIOR MEASUREMENTS [mm] W x D x H*	366 x 352 x 523	366 x 352 x 523	510 x 478 x 555	510 x 478 x 555	570 x 523 x 1045	570 x 523 x 1045
EXTERIOR MEASUREMENTS [mm] W x D x H*	445 x 475 x 810	445 x 475 x 810	600 x 600 x 825	600 x 600 x 825	670 x 660 x 1530	670 x 660 x 1530
CLEAR OF DOOR [mm] W x H**	358 x 516	358 x 516	504 x 552	504 x 552	568 x 855	568 x 855
INSULATOR THICKNESS [mm]	40	40	45	45	75	75
INTERIOR FINISH	Epoxy covered steel	Stainless steel	Epoxy covered steel	Stainless steel	Epoxy covered steel	Stainless steel
EXTERIOR FINISH	Stainless steel					
INTERIOR DOOR	Optional	Optional	Optional	Optional	Optional	Optional
TYPE OF EXTERIOR DOOR	Blind	Blind	Blind	Blind	Blind	Blind
LOCK	Yes	Yes	Yes	Yes	Yes	Yes
NUMBER OF SHELVES	2	2	2	2	3	3
SIZE OF THE SHELVES [mm] W X D***	358 x 516	358 x 516	530 x 650	660 x 800	530 x 650	530 x 650
MATERIAL OF THE SHELVES	Epoxy covered steel	Stainless steel	Epoxy covered steel	Stainless steel	Epoxy covered steel	Stainless steel
SHELVES SURFACE/ CHAMBER'S TOTAL [m ²]	0,17	0,17	0,18	0,18	0,34	0,18
WALL BYPASS / CABLE GLAND	Optional	Optional	Optional	Optional	Optional	Optional
INTERNAL SOCKETS	Yes	Yes	Yes	Yes	Yes	Yes
DATALOGGER	In models with 4001 series controller					
USB OUTPUT	In models with 4001 series controller					
SCREEN GRAPHICS	In models with 4001 series controller					
RS485 CONNECTION PORT WITH MODBUS	In models with 4001 series controller					
REMOTE ALARM EXIT FREE OF POTENTIAL	Yes	Yes	Yes	Yes	Yes	Yes
BATTERY	In models with 4001 series controller					
VOLTAGE FAILURE ALARM	In models with 4001 series controller					
ROOM TEMPERATURE PROBE	Optional	Optional	Optional	Optional	Optional	Optional
TYPE OF COOLING	R134a optional R290, depending on the application					
ROOM TEMPERATURE PROBE	from +10°C to +32°C					
ELECTRIC POWER [W]	520	520	520	520	750	750
VOLTAGE / FREQUENCY [V/HZ]	230/50 optional 110/60 and 220/60					
WEIGHT [KG]	40	40	60	60	118	118

*Width x Depth x Height **Width x Height ***Widht x Depth

RANGE	VERTICAL FLOW REFRIGERATED INCUBATORS - LINE 4000				
ERIS MODELS WITH HUMIDITY CONTROL		ERIS 40455 HR INOX	ERIS 40655HR INOX	ERIS 40805 HR INOX	ERIS 41315 HR INOX
ERIS MODELS WITHOUT HUMIDITY CONTROL	ERIS 40455 HR	ERIS 40455 INOX	ERIS 40655 INOX	ERIS 40805 INOX	ERIS 41315 INOX
ERI MODELS WITH HUMIDITY CONTROL		ERI 40455 HR INOX	ERI 40655 HR INOX	ERI 40805 HR INOX	ERI 41315 HR INOX
ERI MODELS WITHOUT HUMIDITY CONTROL	ERI 40455 HR	ERI 40455 INOX	ERI 40655 INOX	ERI 40805 INOX	ERI 41315 INOX
TEMP. (°C) RANGE WITHOUT HUMIDITY CONTROL	+ 4/ + 55 [Optional: -10°C/-20°C/-30°C]				
TYPE OF ERIS/ERI CONTROLLER	from 20% to 90% HR				
MODELS WITH CONTROLLED HUMIDITY	+ 20/ + 40				
TEMP. RANGE WITH CONTROLLED HUMIDITY (°C)	4001 CONTROLLER in ERIS models / 2000 CONTROLLER in ERI models				
RATED CAPACITY NET/GROSS [liters]	438/455	438/455	615/655	780/805	1353/1395
INTERIOR MEASUREMENTS [mm] W x D x H*	570 x 523 x 1470	570 x 523 x 1470	580 x 693 x 1529	606 x 848 x 1512	1277 x 693 x 1529
EXTERIOR MEASUREMENTS [mm] W x D x H*	670 x 660 x 1955	670 x 660 x 1955	687 x 815 x 2125	757 x 979 x 2121	1384 x 814 x 2123
CLEAR OF DOOR [mm] W x H**	568 x 1280	568 x 1280	575 x 1488	605 x 1494	575 x 1488
INSULATOR THICKNESS [mm]	50	50	55	55	55
INTERIOR FINISH	Galvanized steel plastified in white	Stainless steel	Stainless steel	Stainless steel	Stainless steel
EXTERIOR FINISH	Stainless steel				
INTERIOR DOOR	Optional	Optional	Optional	Optional	Optional
TYPE OF EXTERIOR DOOR	Blind	Blind	Blind	Blind	Blind
LOCK	Yes	Yes	Yes	Yes	Yes
NUMBER OF SHELVES	4	4	4	4	4 + 4
SIZE OF THE SHELVES [mm] W X D***	500 x 445	500 x 445	500 x 518	570 x 790	500 x 518
MATERIAL OF THE SHELVES	Galvanized steel plastified in white	Stainless steel	Stainless steel	Stainless steel	Stainless steel
SHELVES SURFACE/ CHAMBER'S TOTAL [m ²]	0,22	0,22	0,26	0,18	0,26
WALL BYPASS / CABLE GLAND	Optional	Optional	Optional	Optional	Optional
INTERNAL SOCKETS	Yes	Yes	Yes	Yes	Yes
DATALOGGER	In models with 4001 series controller				
USB OUTPUT	In models with 4001 series controller				
SCREEN GRAPHICS	In models with 4001 series controller				
RS485 CONNECTION PORT WITH MODBUS	In models with 4001 series controller				
REMOTE ALARM EXIT FREE OF POTENTIAL	Yes	Yes	Yes	Yes	Yes
BATTERY	In models with 4001 series controller				
VOLTAGE FAILURE ALARM	In models with 4001 series controller				
ROOM TEMPERATURE PROBE	Optional	Optional	Optional	Optional	Optional
TYPE OF COOLING	R134a optional R290, depending on the application				
ROOM TEMPERATURE PROBE	from +10°C to +32°C				
ELECTRIC POWER [W]	850	850	950	1000	1250
VOLTAGE / FREQUENCY [V/HZ]	230/50 optional 110/60 and 220/60				
WEIGHT [KG]	141	141	160	178	278

*Width x Depth x Height **Width x Height ***Widht x Depth