

Laboratory INCUBATORS



laftech

Call: 1300 306 002 www.laftech.com.au

LAF Technologies Pty Ltd

Head Office: 12 Royan Place, Bayswater North, VIC 3153 Australia



Accredited Laboratory

JSR

[주] 제이에스리서치
JS Research Inc.

Laboratroy

INCUBATOR

SELECTION GUIDE

Wide Range of Choice

JSGI-Series General Heated Incubator



- ▶ amb. +5 °C ~ 70 °C
- ▶ Constant Temperature
- ▶ Timer On / Off
- ▶ RS-232C or 485 [OPTION]
- ▶ Program Controller
- ▶ 5 PTN 80 SEG [OPTION]



MODEL	CAPACITY	TEMPERATURE	ACCURACY
JSGI-050T	48 L	amb. + 5 °C ~ 70 °C	± 0.2 °C
JSGI-100T	96 L		± 0.2 °C
JSGI-150T	150 L		± 0.2 °C
JSGI-250T	250 L		± 0.3 °C
JSGI-250DT	2 x 250 L		± 0.3 °C

JSGI-Series Compact Incubator



- ▶ amb. +5 °C ~ 50 °C
- ▶ Constant Temperature
- ▶ Timer On / Off



MODEL	CAPACITY	TEMPERATURE	ACCURACY
JSGI-10T	9.3 L	amb. + 5 °C	± 0.2 °C
JSGI-30T	31.5 L	~ 50 °C	± 0.2 °C

JSBI-C Series Cooled BOD Incubator



- ▶ +0 °C ~ 70 °C
- ▶ Constant Temperature
- ▶ Timer On / Off
- ▶ RS-232C or 485 [OPTION]



MODEL	CAPACITY	TEMPERATURE	ACCURACY
JSBI-050C	50 L	+ 0 °C ~ 70 °C	± 0.2 °C
JSBI-100C	100 L		
JSBI-150C	150 L		
JSBI-250C	250 L		
JSBI-420C	420 L		
JSBI-840C	840 L		

JSBI-CP Series Programmable Cooled Incubator



- ▶ +0 °C ~ 70 °C
- ▶ Program Controller
- ▶ 5 PTN 80 SEG
- ▶ RS-232C or 485 [OPTION]



MODEL	CAPACITY	TEMPERATURE	ACCURACY
JSBI-150CP	150 L	+ 0 °C ~ 70 °C	± 0.2 °C
JSBI-250CP	250 L		
JSBI-420CP	420 L		

JSBI-DCP Series Dual Chamber Cooled Incubator



- ▶ Dual Chamber
- ▶ +0 °C ~ 70 °C
- ▶ Constant Temperature or Program Controller
5 PTN 80 SEG
- ▶ Timer On / Off
- ▶ RS-232C or 485 [OPTION]



MODEL	CAPACITY	TEMPERATURE	ACCURACY
JSBI-250DC	2 x 250 L	+ 0 °C ~ 70 °C	± 0.2 °C
JSBI-250DCP			

JSMI-02 Series 2 Chamber Incubator



- ▶ Dual Chamber
- ▶ +0 °C ~ 70 °C
- ▶ Constant Temperature or Program Controller
5 PTN 80 SEG
- ▶ Timer On / Off
- ▶ Photoperiodic Light Control
- ▶ RS-232C or 485 [OPTION]



MODEL	CAPACITY	TEMPERATURE	FEATURE
JSMI-02C	2 x 125 L	+ 0 °C ~ 70 °C	Constant
JSMI-02CP			Program
JSMI-02CPL			Light

JSMI-04 Series Multi-Room Incubator



- ▶ Four Chamber
- ▶ +0 °C ~ 70 °C
- ▶ Constant Temperature or Program Controller
5 PTN 80 SEG
- ▶ Timer On / Off
- ▶ Photoperiodic Light Control
- ▶ RS-232C or 485 [OPTION]



MODEL	CAPACITY	TEMPERATURE	FEATURE
JSMI-04T	4 x 125 L	amb. + 5°C ~ 70°C	Heated
JSMI-04C			Cooled
JSMI-04CP		0 °C ~ 70 °C	Program
JSMI-04CPL			Light

JSSC-Series Cold Lab Storage Chamber



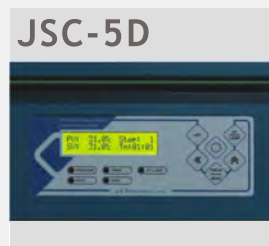
- ▶ 4 °C Refrigerator
- ▶ On/Off Control
- ▶ RS-232C or 485 [OPTION]



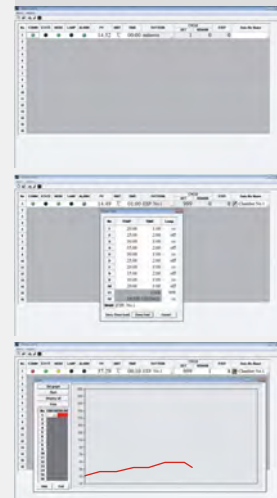
MODEL	CAPACITY	TEMPERATURE	ACCURACY
JSSC-700C	686 L	+ 0 °C ~ 10 °C	± 2.0 °C
JSSC-1200C	1176 L		

Controller Guide

	JSC-0D Basic Controller	JSC-1D Digital PID Controller	JSC-3D Programmable Controller	JSC-5D Programmable Controller
Type	Digital PID		16-bit Microprocessor	
Display	LED		2-Line Back light LCD	
Operation	Constant Temperature		Constant Temp. Mode Program Mode	
Accuracy	± 0.1 °C		± 0.1 °C	
Timer	Auto START/STOP		Auto STOP	
Timer Scale	Max. 99min 59sec / 99hr 59min / 99 day 23hr selectable		Max. 99min 59sec / 99hr 59min selectable	
Pattern Memory	n/a	n/a	1 Pattern	5 Patterns
Max. Segment			11 Segments	80 Segments
Max. Repeats			999 or unlimited Segment Skip	999 or unlimited Segment Skip Pattern Link
Light Control	On/Off control integrated with programming			
RS-232C or RS-485	n/a	Yes [OPTION]	Yes [OPTION]	Yes [OPTION]
PC Software	n/a	Yes [OPTION]	Yes [OPTION]	n/a
Calibration	Yes	Yes	Yes	Yes
Auto-tuning	Yes	Yes	Yes	Yes



▶ PC Software [OPTION]



- ▶ RS-232C Serial Port Communication
- ▶ Turn On and Off control
- ▶ Temperature and Timer Setting
- ▶ Pattern Programming and uploading
- ▶ Current temperature Graph Rendering
- ▶ Temperature Data Logging
- ▶ Alarm Signal
- ▶ RS-232C 시리얼 포트 통신
- ▶ 작동, 정지 제어
- ▶ 온도설정, 타이머 설정 기능
- ▶ 패턴 프로그래밍 기능
- ▶ 작동 중 온도 그래프 표시 기능
- ▶ 온도 데이터 수집 및 저장 기능
- ▶ 알람 현황 표시

ASCII Data Collection

Date	Time	Temp	Step	Seg	Cycle
2014:01:08	09:00:00	37.00	00:05	03	001/999
2014:01:08	09:00:10	37.01	00:05	03	001/999
2014:01:08	09:00:20	37.01	00:05	03	001/999
2014:01:08	09:00:30	37.00	00:05	03	001/999

Performance & Convenience

Construction



- ▶ Durable epoxy powder coated metallic casing
- ▶ 내구성이 뛰어난 에폭시 분체 도장

Chamber



- ▶ Corrosion resistant Stainless Steel 304 chamber with seamless round cornered edge allows easy cleaning and prevent leakage
- ▶ 내부식성이 뛰어난 Stainless Steel 304 재질의 챔버 코너는 이음새없이 라운드 처리 되어 있어 세척이 간편

Inner Glass Door



- ▶ High density silicone packing with air-tight door lock
- ▶ Removable and height adjustable shelf by 25mm spacing
- ▶ 내부 유리 도어와 고밀도 실리콘 패키징, 밀착식 도어락
- ▶ 25mm 간격으로 높이 조절 가능한 선반

Light Control



- ▶ Programmable Photoperiodic lighting control system
- ▶ 일광조절이 가능한 조도 ON/OFF 프로그램기능

Safety



- ▶ **DUAL OVER TEMP. CUT-OFF**
 - 1) Digital system cut-off heater and AUDIO VISUAL ALARM in case +2°C above set temperature
 - 2) Analog system cut-off heater 10% above set temp.
- ▶ **MAX TEMP CUT-OFF** heater and AUDIO VISUAL ALARM when +1°C above maximum limit
- ▶ **GLASS DOOR SWITCH**
- ▶ **SENSOR DISCONNECTION ALARM**
- ▶ **OVER CURRENT CUT-OFF** : Electrical Leakage Breaker
- ▶ **이중과열방지장치**
 - 1) 설정 온도 +2 °C 초과 시 히터 차단 및 시청각 알람
 - 2) 콘트롤러 오류로 지정 온도 10% 초과 시 히터차단
- ▶ **최고온도알람기능** : 작동한계 온도 +1°C 초과시 히터 차단
- ▶ **도어스위치**
- ▶ **센서단락알람**
- ▶ **누전차단기** : 전기누설 시 주전원 차단

Maintenance



- ▶ Easy to maintain refrigeration system with dust filter
- ▶ 편리한 유지보수 먼지 필터 장착

Cooled INCUBATOR

REFRIGERATED LOW TEMPERATURE B.O.D. Incubator



Refrigerated BOD Incubator

JSBI-C Series Refrigerated BOD Incubator gives excellent incubation conditions below ambient temperature for bacterial, fungal, cell and tissue culture incubation temperature range from 0°C to 70°C or BOD (Biological Oxygen Demand) test, QA or QC laboratory in pharmaceutical industries.

Specifications

Heating	Forced Air Convection
Cooling	CFC Free air cooled compressor
Temp. Range	+ 0 °C ~ 70 °C
Accuracy	± 0.2 °C at 20.0°C (JSBI-150C)
Uniformity	± 0.5 °C at 20.0°C (JSBI-150C)
Control	Microprocessor PID Control Auto START / STOP Timer
Sensor	Class A Pt-100 Ω Sensor
Safety	Over-Temperature Cut-Off Over Current Cut-Off
Material	Body : Epoxy Powder Coated Steel Chamber : Stainless Steel 304 Inner Glass Door : Tempered Safety Including PVC Coated Wire Shelf Built-in Caster for easy transport
Electric	220 ± 10% VAC 50/60Hz 1-Phase

Plug config.



CEE 7/7 Schuko

or




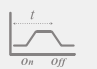
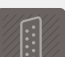


BS 1363

Control Accuracy

- ± 0.1 °C Digital PID Controller with automatic START/STOP timer max. 99min 59sec / 99hr 59min / 99 day 23hr
- Temperature calibration, auto-tuning function
- Class A Pt-100 Ω sensor
- 정밀한 PID 컨트롤러는 온도를 ±0.1 °C 단위로 제어
- 예약 / 정지 타이머 내장 99분59초 / 99시간59분 / 99일23시간
- 온도보정, 오토튜닝 기능 내장
- Class A Pt-100 Ω 온도 센서



-  Cooled +0 °C to 70 °C
-  Constant Temperature Controller
-  Timer On / Off 
-  [OPTION] RS-232C Serial Computer Interface

Performance

- ▶ Durable epoxy powder coated metallic casing
- ▶ Corrosion resistant Stainless Steel 304 chamber
- ▶ Durable Stainless Steel 304 Sheath Heater and copper-aluminum finned evaporator
- ▶ Forced circulation for excellent thermal uniformity
- ▶ Separate heating and cooling compartment prevents contamination and maintenance free
- ▶ Cooling system with hermetically sealed compressor
- ▶ 내구성이 뛰어난 에폭시 분체 도장 본체
- ▶ 내부식성이 뛰어난 Stainless Steel 304 재질의 챔버
- ▶ 내구성과 내부식성이 뛰어난 Stainless Steel 304 재질의 히터와 냉각 효율이 뛰어난 냉각시스템
- ▶ 부드러운 공기 순환식 설계로 균일한 온도 분포
- ▶ 가열챔버가 후면에 위치하여 액체 흘림으로 인한 고장이 적음
- ▶ 내구성이 강한 냉각 시스템

Convenience

- ▶ Outer door with self adhesive magnetic packing
- ▶ Inner glass door with high density silicone packing and air-tight door lock
- ▶ Stainless Steel 304 Chamber with seamless round cornered edge allows easy cleaning and prevent contamination
- ▶ Removable and height adjustable shelf by 25mm spacing
- ▶ Auto-defrost system, user settable interval and time
- ▶ Built-in casters for easy transport
- ▶ 자석 접착방식의 외부 도어 패킹
- ▶ 내부 유리 도어와 고밀도 실리콘 패킹, 밀착식 도어락은 챔버의 기밀성이 뛰어나
- ▶ 챔버의 코너는 이음새 없이 라운드 처리 되어 있어 세척이 간편하고 오염 방지

- ▶ 25mm 간격으로 높이 조절 가능한 선반
- ▶ 제상 간격 및 시간을 조절할 수 있는 자동 제상 시스템
- ▶ 바퀴를 장착하여 설치 및 이동이 편리함

Safety

- ▶ DUAL OVER TEMP. CUT-OFF
- ▶ MAX TEMP CUT-OFF
- ▶ AUDIBLE VISUAL ALARMS
- ▶ SENSOR DISCONNECTION ALARM
- ▶ OVER CURRENT CUT-OFF : Electric Leakage Breaker

Options

Art No.	Descriptions
OEC-001	JSC-1D Digital PID Controller /w RS-232C Interface, PC Software
OEA-001	Power Outlet Consent in Chamber for CEE 7/7 Schuko Plug
OEA-002	Power Outlet Consent in Chamber for BS 1363 Plug

Accessories

Art No.	Descriptions
	Perforated Shelf, Stainless Steel 304
PHS-A06	for JSBI-150C, 250C W470 x D480 mm
PHS-A13	for JSBI-420C W670 x D580 mm
PHS-A14	for JSBI-840C W675 x D525 mm
	PVC Coated Wire Shelf
PHS-C05	for JSBI-150C, 250C W470 x D480 mm
PHS-C06	for JSBI-420C W670 x D580 mm
PHS-C07	for JSBI-840C W675 x D525 mm
PHS-A99	Shelf Support, Set of 4

Ordering Information

	JSBI-150C	JSBI-250C	JSBI-420C	JSBI-840C
Chamber Volume (Capacity)	150 L	250 L	420 L	840 L
Dimensions Inner	500 x 500 x 600	500 x 500 x 1000	700 x 600 x 1000	1400 x 600 x 1000
W x D x H mm Outer	680 x 825 x 1370	680 x 825 x 1770	880 x 925 x 1770	1580 x 925 x 1770
Temperature Range	+0 °C to 70 °C			
Accuracy at 20.0°C	± 0.2 °C	± 0.2 °C	± 0.2 °C	± 0.2 °C
Uniformity at 20.0°C	± 0.5 °C	± 0.5 °C	± 0.5 °C	± 1.0 °C
Number of shelves / Maximum No.	2 / 20	3 / 36	3 / 36	6 / 36
Heater Capacity	900 W	1.0 kW	1.5 kW	2 x 1.5 kW
Refrigeration System	CFC-Free Air Cooled Compressor			
Power Rating	7.1 Amp	7.6 Amp	10.3 Amp	22 Amp
Power Plug	CEE 7/7 Schuko			